



Engine	Cummins X15
Gross Power	280 kW (375 hp / 381 ps) @ 2,000 rpm
Net Power	246 kW (338 hp / 334 ps) @ 2,000 rpm
Maximum Torque	1,825 N·m
Blade Capacity	10 m ³
Operating Weight	40,000 kg

LD36D BULLDOZER

LD36D SPECIFICATIONS >>>

ENGINE

Model	Cummins X15
Emission Regulation	EU Stage V
Gross Power	280 kW (375 hp / 381 ps) @ 2,000 rpm
Net Power	246 kW (330 hp / 334 ps) @ 2,000 rpm
Peak Torque	1,825 N·m
Number of Cylinders	6
Displacement	14.9 L
Aspiration	Turbocharged
Cooling Type	Charge air cooling

ELECTRICAL SYSTEM

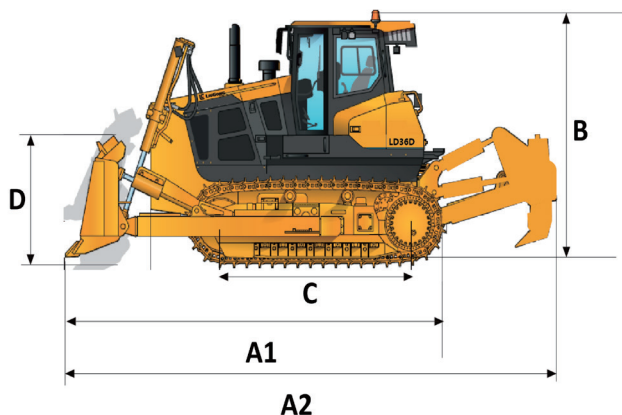
System Voltage	24 V
----------------	------

TRANSMISSION SYSTEM

Transmission Type	Power Shift
Maximum Travel Speed, fwd	11.0 km/h
Maximum Travel Speed, rev	13.3 km/h
Number of Gears, fwd	6
Number of Gears, rev	6

DIMENSIONS

A1 Overall Length without Ripper	6,528 mm
A2 Overall Length with Ripper	8,410 mm
B Height to Top of Cab	3,955 mm
C Track Length on Ground	3,245 mm
D Blade Height	1,760 mm
E Blade Width	4,050 mm
F Track Gauge	2,140 mm
G Width over Track	2,700 mm



UNDERCARRIAGE

Shoe Width	560 mm
Number of Shoes, Single Side	42
Number of Upper Rollers, Single Side	2
Number of Bottom Rollers, Single Side	7
Ground Pressure (without ripper)	85.2 kPa
Ground Pressure (with single-shank ripper)	94.7 kPa
Ground Pressure (with three shank ripper)	96.1 kPa
Track Length on Ground	3,245 mm

BLADE PERFORMANCE

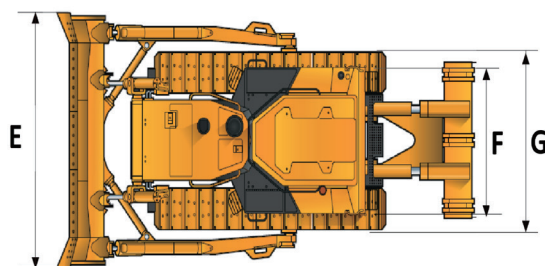
Blade Type	Semi-U blade
Blade Capacity	10 m³
Blade Width	4,050 mm
Blade Height	1,760 mm
Blade Digging Depth	600 mm
Blade Lift Height	1,270 mm
Blade Maximum Tilt	880 mm

OPERATING WEIGHTS

Operating Weight (without ripper)	36,000 kg
Operating Weight (with single shank ripper)	40,000 kg
Operating Weight (with three-shank ripper)	40,600 kg

SERVICE CAPACITIES

Fuel Tank	730 L
Engine Oil	49 L
Cooling System	66 L
Hydraulic Oil Tank	270 L
Transmission System	257 L
Final Drives, each	64 L



Guangxi Liugong Machinery Co., Ltd.

No. 1 Liutai Road, Liuzhou, Guangxi 545007, PR China
T: +86 772 3886124 E: overseas@liugong.com
www.liugong.com

Specifications and designs are subject to change without notice. Machines shown may include optional equipment. Liugong standard and optional equipment may vary from region to region. Please consult your Liugong dealer for information specific to your area. Engine power kW is converted to horsepower (1 kW=1.3596 ps and 1 kW=1.3410 hp) in this file.

11/2025 Designed by LiuGong
Replace the previous versions of 06/2024