



Guangxi LiuGong Machinery Co.,Ltd.
No. 1 Liutai Road, Liuzhou, Guangxi.
545007

PR China

T: +86 0772 3886124

E: overseas@liugong.com

HQ: www.liugong.com

MH: www.lgforklift.cn

Like and follow us:



LIUGONG 012022-ENG

The LiuGong series of logos herein, including but not limited to word marks, device marks, letter of alphabet marks and combination marks, as the registered trademarks of Guangxi LiuGong Group Co., Ltd. are used by Guangxi LiuGong Machinery Co., Ltd. with legal permission, and shall not be used without permission. Specifications and designs are subject to change without notice. Illustrations and pictures may include optional equipment and may not include all standard equipment. Equipment and options varies by regional availability.

CLG2160H

FORKLIFTS



TOUGH WORLD. TOUGH EQUIPMENT.

MAXIMIZE YOUR RETURN ON INVESTMENT

LiuGong's **customer-driven** design and **quality-focused** engineering creates lasting value that will deliver to your bottom line.

DEPENDABLE POWER

Unmatched performance driven by the World-Class Cummins Engine.

ERGONOMIC

Widen operating space and reasonable design can give the operator better experience.



COMFORTABLE

The full hydraulic steering system allows for smooth steering in an ergonomic seating posture, hence improved operator's comfort.

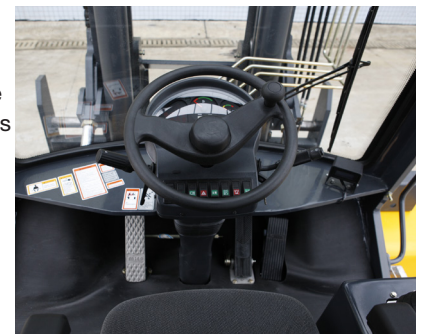


HIGH EFFICIENCY

Newly optimized hydraulic system provides excellent lifting speed, assisting you to finish work efficiently and safely.

GOOD VIEW

The mast and overhead guard are designed for wider view, as well as operator's comfort and safety.



MAINTAINING

The engine hood and rear hood with big angle for easy to maintain.



PARTS

Using genuine LiuGong parts is key to keeping your costs low and your machine in top working order. Our extensive support network is always there when you need it, to maximize your business profitability.

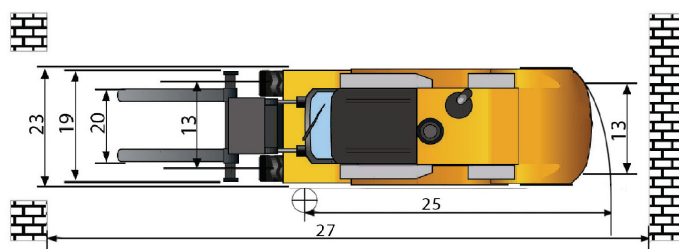
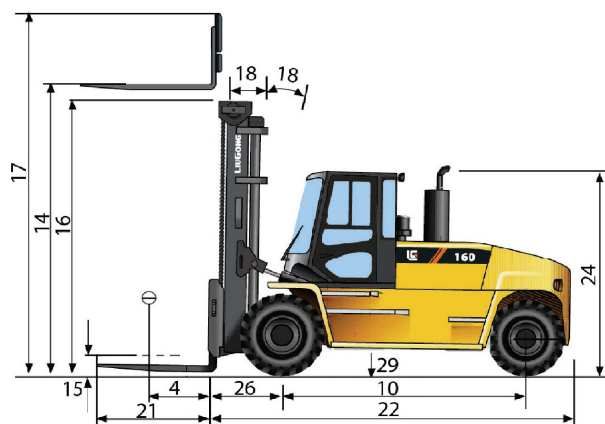
AFTER SALES SERVICE

As a customer of LiuGong you can feel confident that our dealers and regional offices will be there to support you with training, service and maintenance needed throughout the life of your machine.



SPECIFICATION

General	Model	1			CLG2160H	CLG2160H
	Power Type	2			Diesel	Diesel
	Base Capacity	3	@rated load center	kg	16,000	16,000
	Load Center	4		mm	600	600
Weights	Service Weight	5	unloaded	kg	20,320	20,040
	Axle Load	6	loaded / unloaded, front	kg	32,740/9,945	32,625/9,830
		7	loaded / unloaded, rear	kg	3,655/10,375	3,490/10,210
Tires	Tire Type	8			Pneumatic	Pneumatic
	Wheels	9	front / rear		4 / 2	4 / 2
	Wheelbase	10		mm	3,500	3,500
	Tire Size	11	front		12.00-20-18PR	12.00-20-18PR
		12	rear		12.00-20-18PR	12.00-20-18PR
Mast	Tread Width	13	front / rear		1,844/2,120	1,844/2,120
	Max. Fork Height	14	with std 2-stage mast	mm	4,000	4,000
	Free lift	15	with std 2-stage mast	mm	90	90
	Height, Upright Lowered	16	with std 2-stage mast	mm	3,870	3,870
	Height, Upright Extended	17	with std 2-stage mast	mm	5,870	5,870
	Mast Tilt, Fwd/Back	18	with std 2-stage mast	deg	6° / 12°	6° / 12°
	Carriage	19	width	mm	2,450	2,450
	Fork Spread	20	minimum / maximum	mm	470/2,350	470/2,350
	Fork Dimensions	21	T x W x L	mm	90 x 200 x 1,520	90 x 200 x 1,520
	Length to Fork Face	22	with std 2-stage mast	mm	5,250	5,250
Chassis	Overall Width	23		mm	2,550	2,550
	Overhead Guard Height	24		mm	2,960	2,960
	Turning Radius	25	minimum outside	mm	4,770	4,770
	Fork Overhang	26	with std 2-stage mast	mm	875	875
	Right Angle Stack	27	add load length and clearance	mm	7,365	7,365
	Ground Clearance	28	minimum loaded	mm	295	295
		29	center of wheelbase	mm	350	350
	Travel Speed	30	loaded / unloaded	km/h	24/ 25	23 / 24
Performance	Lift Speed	31	loaded / unloaded	m/s	0.37 / 0.40	0.37 / 0.40
	Lower Speed	32	loaded / unloaded	m/s	0.51 / 0.42	0.51 / 0.42
	Max. Drawbar Pull	33	loaded	kg	130	128
	Max. Gradeability	34	loaded / unloaded	%	28 / 28	26 / 28
Systems	Brakes	35	service		Foot / Hyd	Foot / Hyd
		36	parking		Button / Hyd	Button / Hyd
		37	manufacturer		Cummins	Cummins
	Engine	38	model		B6.7	QSB6.7
		39	emission compliance		T4F / STAGE V	STAGE III
		40	cylinders		6	6
		41	displacement	liters	6.7	6.7
		42	rated power	kW/rpm	129/2,200	129/2,200
		43	Max. torque	N · m/rpm	881 / 1,300	800 / 1,400

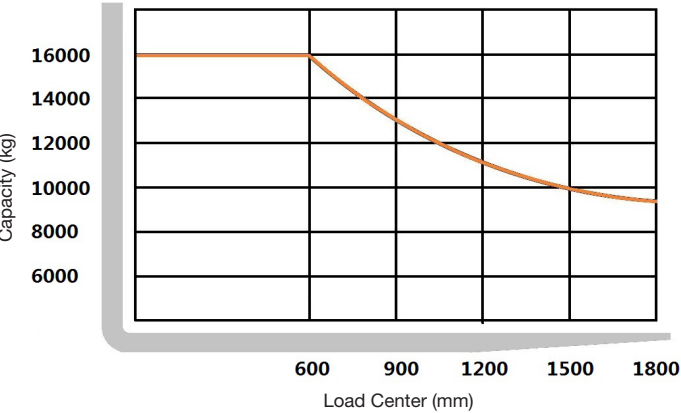


APPLICATION



CAPACITY

Mast type	Maximum Fork Height (MFH)	Mast Overall Lowered Height (OAL)	Freee Lift with Load Backrest	Mast Tilt Angle (F/B)	Rated Load Capacity		Total Weight with Standard Forks
					With Standard Forks	With Sideshifter	
					CLG2160H	CLG2160H	CLG2160H
	mm	mm	mm	degree	kg @ (600mm LC)	kg @ (600mm LC)	Kg
Standard 2-Stage	2700	3225	90	6 / 12	16000	15200	19200
	3000	3375	90	6 / 12	16000	15200	19300
	4000	3875	90	6 / 12	16000	15200	19750
	4500	4125	90	6 / 12	16000	15200	19900
	5000	4375	90	6 / 6	15350	14550	20050
	5500	4675	90	6 / 6	14700	13900	20350
	6000	4925	90	3 / 6	14050	13250	20500



Note:

Vertical axle stands for load capacity while horizontal axle stands for load center, Load center is the distance counted from the front of the fork,.The base point of the standard load is the center point of the cubic with the same 1200mm dimension in length, width and height. The load capacity should be down if mast tilt forward or using non-standard forks of loading goods with extra width. Please realize the different load capacity between different load centers according to load chart.

STANDARD CONFIGURATION

POWER SYSTEM

- Cummins QSB6.7 diesel engine
- ZF automatic transmission
- Kessler drive axle with wet disc brakes
- Heavy duty steering axle
- Elevated air pre-cleaner
- Fuel system pre-filter
- Radiator
- Vertical exhaust

HYDRAULIC SYSTEM

- 4-function hydraulic valve
- Hydrostatic steering
- Oil filter for intake and return

ELECTRIC SYSTEM

- 2 batteries
- Front flood lights
- Front steering lights
- Amber warning lights
- Rear working lights
- Buzzer for back off

UNDERCARRIAGE

- High strength frame
- 1 piece counterweight
- Tow pin
- Air filled pneumatic drive tires
- Air filled pneumatic steer tires

MAST

- 4.0M Standard 2-stage mast
- 2130mm Wide shaft type carriage
- Load backrest
- 1500mm long shaft type pallet forks

OPERATOR STATION

- Closed cabin with AC and heater
- Locks for engine hood
- Grammer full suspension seat
- Ignition lock
- Display with alarms, fuel rate, water temperature, working hour
- Tilt steering column
- Inching, brake and accelerator pedals
- Parking button
- Fire extinguisher
- Floor mat

OPTIONAL CONFIGURATION

POWER SYSTEM

- License plate light

ELECTRIC SYSTEM

- License plate light

UNDERCARRIAGE

- Solid pneumatic drive tires
- Solid pneumatic steer tires

MAST

- Higher 2-stage mast
- Longer shaft type pallet forks

OPERATION STATION

- Master key