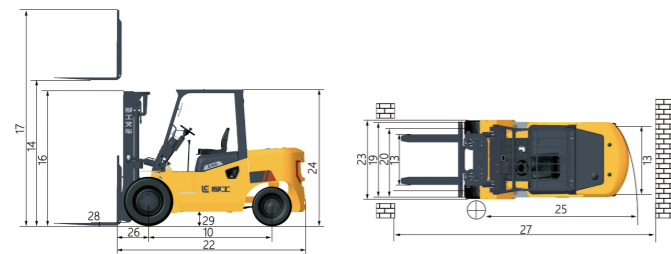


## PRODUCT SPECIFICATIONS

General	Model	1		CPCD45	CPCD45	CPCD50	CPCD50	
	Power Type	2		Diesel	Diesel	Diesel	Diesel	
Weights	Base Capacity	3	kg	4500	4500	5000	5000	
	Load Center	4	@ rated load center	mm	500	500	500	
Weights	Service Weight	5	unloaded	kg	6630	6630	6880	
	Axle Load	6	loaded,front/rear	kg	9925/1280	9925/1280	10595/1360	10595/1360
7		unloaded,front/ rear	kg	3020/3610	3020/3610	22960/3920	2960/3920	
Tires	Tire Type	8		Pneumatic	Pneumatic	Pneumatic	Pneumatic	
	Wheels	9	front / rear		2 / 2	2 / 2	2 / 2	
	Wheelbase	10		mm	2100	2100	2100	
	Tire Size	11	front		300-15-18PR	300-15-18PR	300-15-18PR	300-15-18PR
		12	rear		7.00-12-12PR	7.00-12-12PR	7.00-12-12PR	7.00-12-12PR
Tread Width	13	front/rear	mm	1176/1190	1176/1190	1176/1190	1176/1190	
Mast	Max. Fork Height	14	with std 2-stage mast	mm	3000	3000	3000	
	Freelift	15	with std 2-stage mast	mm	170	170	170	
	Height, Upright Lowered	16	with std 2-stage mast	mm	2285	2285	2285	
	Height, Upright Extended	17	with std 2-stage mast	mm	4177	4177	4177	
	Mast Tilt, Fwd/Back	18	with std 2-stage mast	o	6 / 12	6 / 12	6 / 12	
	Carriage	19	width	mm	1424	1424	1424	
	Fork Spread	20	minimum/maximum	mm	300/1380	300/1380	300/1380	300/1380
	Fork Dimension	21	T x W x L	mm	50 x 150 x 1070	50 x 150 x 1070	50 x 150 x 1070	50 x 150 x 1070
	Length to Fork Face	22	with std 2-stage mast	mm	3195	3195	3230	3230
	Overall Width	23		mm	1493	1493	1493	1493
Chassis	Overhead Guard Height	24		mm	2350	2350	2350	
	Turning Radius	25	minimum outside	mm	2900	2900	2930	2930
	Fork Overhang	26	with std 2-stage mast	mm	548	548	548	548
	Min.right angle stacking aisle width	27	add load length and clearance	mm	4718	4718	4748	4748
	Ground Clearance	28	loaded below mast	mm	165	165	165	165
		29	center of wheelbase	mm	230	230	230	230
	Performance	Travel Speed	30	loaded/unloaded	km/h	24/25	24/25	24/25
Lift Speed		31	loaded/unloaded	mm/s	500/530	500/530	500/530	
Lower Speed		32	loaded/unloaded	mm/s	520/480	520/480	520/480	
Max. Drawbar Pull		33	loaded	kN	29	29	29	
Max. Gradeability		34	loaded/unloaded	%	22/ 30	22/ 30	20/ 28	
System	Brakes	35	service		Foot/Hyd	Foot/Hyd	Foot/Hyd	
		36	parking		Hand /Mech	Hand /Mech	Hand /Mech	
Internal combustion	Engine	37	manufacturer		Xinchai	Xinchai	Xinchai	
		38	model		4D35ZG31-062	4E30YG52-030	4D35ZG31-062	4E30YG52-030
		39	emission compliance		China III	UE V	China III	UE V
		40	cylinders		4	4	4	4
		41	displacement	L	3.47	3	3.47	3
		42	rated power	kw/rpm	60/2200	55.8/2200	60/2200	55.8/2200
		43	max. torque	N.m/rpm	300/1600-1800	320/1200-1400	300/1600-1800	320/1200-1400
		44	fuel tank capacity	L	100	100	100	100



### LG-PB-CPCD45/50 -0224EN

The LiuGong series of logos herein, including but not limited to word marks, device marks, letter of alphabet marks and combination marks, as the registered trademarks of Guangxi LiuGong Group Co., Ltd. are used by Guangxi LiuGong Machinery Co., Ltd. with legal permission, and shall not be used without permission. Specifications and designs are subject to change without notice. Illustrations and pictures may include optional equipment and may not include all standard equipment. Equipment and options varies by regional availability.

Liuzhou Liugong Forklift Co., Ltd.  
No. 1 Yanghe Avenue, Yanghe Industrial  
New Zone, Liuzhou City, Guangxi  
Zip Code (P): 545006  
Sales Hotline (T): 0772-2040713  
Service Hotline (T): 0772-2040720  
E-mail (E): liugongrs@liugong.com  
Website (W): www.lgforklift.cn

**LIUGONG**  
TOUGH WORLD. TOUGH EQUIPMENT.



Official website    Media Platform

**LIUGONG**



**CPCD45/50L**  
**E SERIES INTERNAL COMBUSTION**  
**COUNTERBALANCE FORKLIFT**

Engine    Xinchai  
Fuel    Diesel  
Rated load    4500-5000kg  
Rated Power    55.8/60 KW/2200rpm

TOUGH WORLD. TOUGH EQUIPMENT.

# PRODUCT DESCRIPTION

E series 4.5/5T forklift products are newly developed by Liugong according to the market needs, Newly developed middle tonnage forklift, using a new industrial design and advanced technology, featuring good stability of heavy load, strong power, low fuel consumption, comfortable handling, strong adaptability to working conditions, convenient maintenance, etc., which can be applied to the different working conditions such; wood industry, stone, ceramics, heavy machinery manufacturing, leasing and other industries.



**Excellent heavy duty performance**  
2100mm long wheelbase, high-strength chassis structure, high-strength mast.

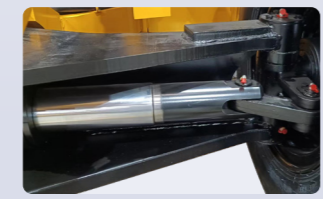
**Excellent power performance**  
Powerful engine, engine power upgrade 12% and 39% more torque

**High efficiency, low fuel consumption**  
With a large displacement pump and a load-sensitive hydraulic system, the power loss is reduced, easy lifting at low speeds, strong performance low fuel consumption.

**Good maintainability**  
Most of the maintenance can be done by standing on the ground, and the engine hood open angle is large easy to maintain the engine.

**Excellent heavy duty performance**  
2100mm long wheelbase, high-strength chassis structure, high-strength mast.

**Higher reliability and durability**  
Counter weight designed with double air outlets, good heat dissipation, IP67 protection level of electrical connector, excellent waterproof performance.



**Ergonomic Cabin**  
• Ergonomic cab layout, so the driver does not get tired after a long time;  
• 300mm small diameter steering wheel, effectively solve the fatigue.

**Large-screen LCD instrument**  
• 3.5-inch large-screen LCD instrument with rich condition information and clear display.

**Steering axle**  
• The steering axle angle is increased, the oil cylinder is thickened, and the ordinary bearing is replaced with tapered roller bearing with high reliability, the turning radius is small, and the tire loss is less.

**Double-air outlets design**  
• The cooling system is reasonably optimized and adopts aluminum tube and fin fan heaters, independent oil heat dissipation, and large double air outlets, which greatly improves the cooling efficiency, improves the reliability of heavy-duty operation, and ensures the stable operation of key components.

## STANDARD CONFIGURATION

Power system	Xinchai China Tier III 4D35ZG31 engine	Electrical systems	Maintenance-free battery	Covering Systems	Standard overhead guard
	Middle exhaust		LED lights		Standard seat
	Tube-fin radiator		Electric horns		Adjustable steering column
	Single air filter		Backup alarm		Anti-slip step plates
Hydraulic system	2-Function control valve	Masts/attachments	3.0M Standard 2-stage	Chassis	Electric shift
	Priority hydraulic power steering		Tilt cylinder angle (6°/12°)		Drive axle
	Lift speed limiting valve		Fork carriage wide 1.38m		Steering axle
	Tilt self-locking valve		Forks 1070mm		Pneumatic air tires
	Explosion-proof valve for lifting oil hoses				Traction pin
	Hydraulic oil suction filter				
	Hydraulic oil return filter				

## Optional Configuration

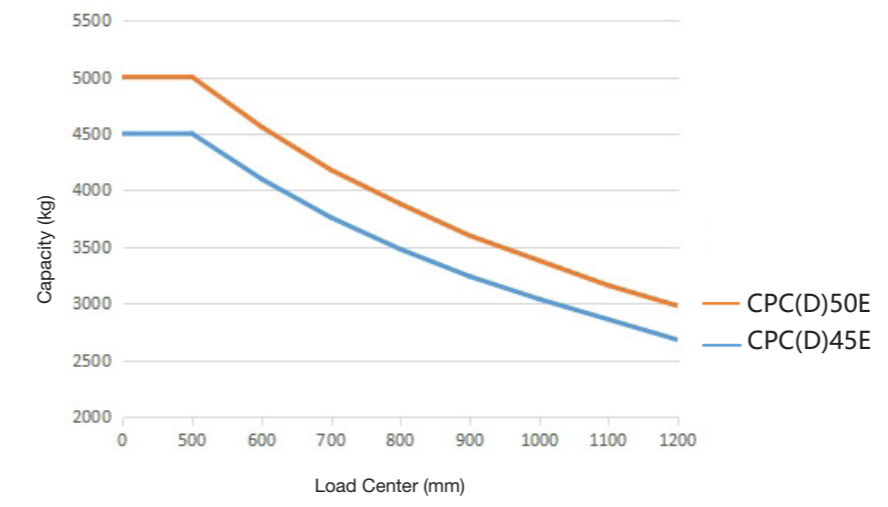
Power system	Xinchai EU / Tier V 4E30YG52	Electrical systems	Air conditioning and heating	Covering Systems	Overhead guard (Lower 100mm than standard)
	Elevated air pre-cleaner		OPS system		Enclosed cab
	2nd refined air filter		Amber warning light		Half-suspension vinyl seat
	Oil-bath air filter		license plate light		Full-suspension vinyl seat
Hydraulic system	3-Function control valve (without hose group)	Masts/attachments	3-6 M Standard 2-stage	Chassis	Grammer full-suspension vinyl seat
	3-Function control valve (with 3rd function hose group)		4-6M Full free 3-stage		Solid tires
	4-Function control valve (without hose group)		Forks 1070mm		Non-marking solid tires
	4-Function control valve (with 3rd & 4th function hose groups)		Forks 1220mm		Dual air filled pneumatic tires
			Forks 1370mm		Dual solid tires
	Forks 1670mm	Solid tires with shock holes (Deflector Holes)			
	Forks 1820mm				
	Forks / 1970mm/ 2120mm/ 2440mm				

## MAST AND CAPACITY INFORMATION

Mast type	Maximum Fork Height (MFH)	Mast Overall Lowered Height (OAL)	Mast Tilt Angle (F/B)	Free Lift with Load Backrest	Rated Load Capacity (With Standard Forks)(kg)		Total Weight with Standard Forks (With Standard Forks)(kg)			
					CPC(D)45E	CPC(D)50E-L	CPC45E	CPC50E-L	CPCD45E	CPCD50E-L
Standard 2-Stage	2700	2135	6/12	170	4500	5000	6463	6713	6593	6843
	3000	2285	6/12	170	4500	5000	6500	6750	6630	6880
	3500	2535	6/12	170	4500	5000	6566	6816	6696	6946
	4000	2835	6/6	170	4500	5000	6719	6969	6849	7099
	4500	3085	6/6	170	4200	4500	6784	7034	6914	7164
	5000	3335	6/6	170	3600	4000	6848	7098	6978	7228
	5500	3635	6/6	170	3200	3600	6925	7175	7055	7305
6000	3885	6/6	170	3000	3300	6989	7239	7119	7369	

Mast type	Maximum Fork Height (MFH)	Mast Overall Lowered Height (OAL)	Mast Tilt Angle (F/B)	Free Lift with Load Backrest	Rated Load Capacity (With Standard Forks)(kg)		Total Weight with Standard Forks (With Standard Forks)(kg)			
					CPC(D)45E	CPC(D)50E-L	CPC45E	CPC50E-L	CPCD45E	CPCD50E-L
Standard 2-Stage	2700	2135	6/12	1243	4500	5000	6484	6734	6614	6864
	3000	2285	6/12	1393	4500	5000	6525	6775	6655	6905

Mast type	Maximum Fork Height (MFH)	Mast Overall Lowered Height (OAL)	Mast Tilt Angle (F/B)	Free Lift with Load Backrest	Rated Load Capacity (With Standard Forks)(kg)		Total Weight with Standard Forks (With Standard Forks)(kg)			
					CPC(D)45E	CPC(D)50E-L	CPC45E	CPC50E-L	CPCD45E	CPCD50E-L
Standard 2-Stage	4000	2115	6/6	1223	4350	4800	6737	6987	6867	7117
	4300	2220	6/6	1328	4150	4400	6778	7028	6908	7158
	4500	2285	6/6	1393	4000	4200	6825	7075	6955	7205
	4800	2385	6/6	1493	3700	3950	6842	7092	6972	7222
	5000	2450	6/6	1558	3400	3800	6868	7118	6998	7248
	5500	2665	6/6	1773	2950	3450	6950	7200	7080	7330
	6000	2845	6/6	1953	2800	3150	7020	7270	7150	7400
	6500	3050	6/6	2158	2500	2800	7096	7346	7226	7476
	7000	3215	6/6	2323	2100	2400	7171	7421	7301	7551



Note:  
Vertical axle stands for load capacity while horizontal axle stands for load center, Load center is the distance counted from the front of the fork. The base point of the standard load is the center point of the cubic with the same 1000mm dimension in length, width and height. The load capacity should be down if mast tilt forward or using non-standard forks of loading goods with extra width. Please realize the different load capacity between different load centers according to load chart.